

## ControlVu - PoE Touch Panel

The ControlVu touch panel gives operators the freedom to change layouts and control devices directly from a PoE tablet right in front of them, with a simple touch. ControlVu can be easily designed with its own built-in control panel designer, where every button on every panel can be customized to the operators' needs. Customization options on the panel are endless and can include any number of buttons, colors and functions. Each button can be programmed to launch a different layout, manipulate sources & displays, control external devices, or run any one of the available scripts. All of this power is available for users to customize without having to write a single line of code, creating a flexible user experience for their operators without any training.



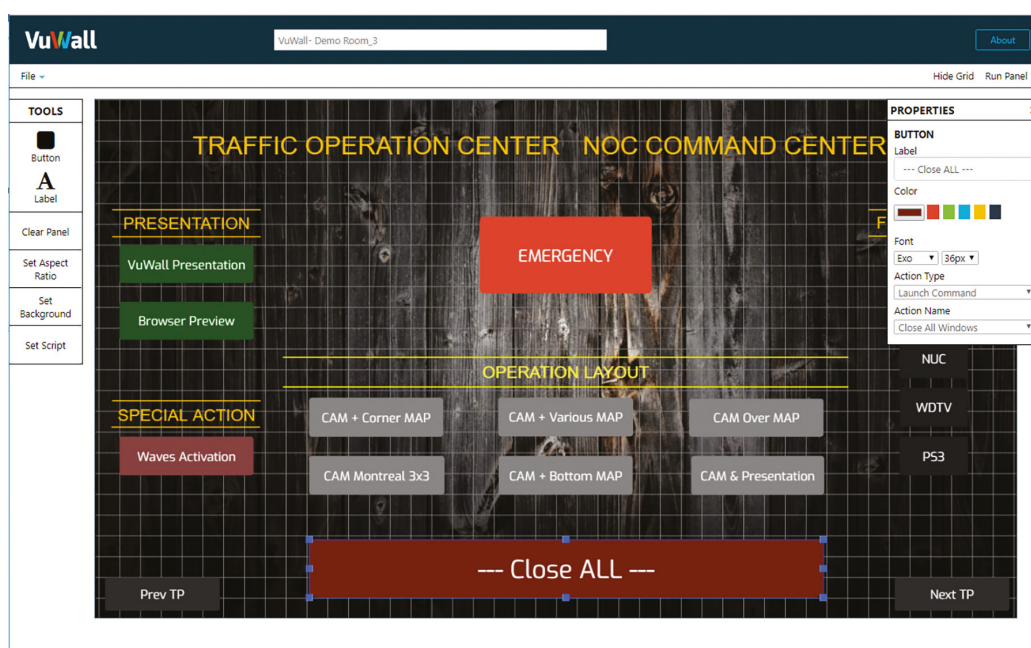
### Features

- Fully integrated 10", 12" or 15" touch panel for easy control of VuWall software
- Control video walls, displays and other external devices
- Customize individual control interfaces with built-in Control Panel Designer

Technical Specifications	10" Model ControlVu 10-2	12" Model ControlVu 12-2	15" Model ControlVu 15-2
<b>Panel</b>			
Resolution	1280 x 800	1920 x 1080	1920 x 1080
Aspect Ratio	16:10 wide	16:9 wide	16:9 wide
Brightness	500 cd/m2	350 cd/m2	350 cd/m2
Contrast Ratio	600 : 1	800 : 1	800 : 1
Touch Type	5 point touch projected capacitive	10 point touch projected capacitive	10 point touch projected capacitive
<b>System</b>			
CPU	Cortex A17, Quad Core, RK3288	Cortex A17, Quad Core, RK3288	Cortex A17, Quad Core, RK3288
OS	Android 8	Android 8	Android 8
Network LAN RJ45	10/100/1000 Mbps LAN	10/100/1000 Mbps LAN	10/100/1000 Mbps LAN
WiFi	802.11 a/b/g/n (optional)	802.11 a/b/g/n (optional)	802.11 a/b/g/n (optional)
Power over Ethernet (PoE)	IEEE 802.3 af/at	IEEE 802.3 af/at	IEEE 802.3 af/at
Speakers	2 x 2 W	2 x 2 W	2 x 3 W
<b>Physical</b>			
Weight	610g / 21.5 oz.	900g / 2 lbs.	1300g / 2.86 lbs.
Dimensions	252 x 178 x 24 mm / 10 x 7 x 1"	296 x 192 x 26 mm / 11.7 x 7.6 x 1"	388 x 242 x 28 mm / 15.3 x 9.5 x 1.1"
Mounting/VESA	VESA 75	VESA 75	VESA 100
Power Supply	12 V / 2 A	12 V / 2 A	12 V / 2 A
<b>Other</b>			
Storage Temperature	-15 to ~ 65°C / 5 to ~149°F	-15 to ~ 65°C / 5 to ~149°F	-15 to ~ 65°C / 5 to ~149°F
Working Temperature	-10 to ~ 50°C / 14 to ~122°F	-10 to ~ 50°C / 14 to ~122°F	-10 to ~ 50°C / 14 to ~122°F
Storage/Working Humidity	10 ~ 90% non-condensing	10 ~ 90% non-condensing	10 ~ 90% non-condensing
MTBF	45,000 hours	45,000 hours	45,000 hours
Certifications	FCC, CE, RoHS	FCC, CE, RoHS	FCC, CE, RoHS

## Control Panel Designer

The integrated Control Panel Designer is a tool provided with the VuWall2 and TRx software to easily build custom control panels for the ControVu touch panel, without any programming! Each button can launch layouts, scripts or even control external devices. Multiple panels can be created from the same interface, allowing a single admin to design a custom panel for every operator station. With endless design possibilities, users can upload logos, images, and backgrounds and create buttons from a variety of shapes and colors. The built-in scripting tool allows for an easy way to assign a series of multiple tasks with a single button. These tasks may include various commands such as manipulating layouts and other triggers, as well as controlling external devices such as switching displays on and off, controlling audio settings.



### Features

- Compatible with ControlVu touch panel and all other html5 compatible browsers running on mobile devices or desktops.
- Customizable buttons, backgrounds, and images.
- Customizable actions to launch layouts, scripts, and control external devices such as displays, audio, etc.



VuWall Technology Inc.  
181 Hymus Blvd., Suite 301  
Montreal, Quebec  
H9R 5P4, Canada  
T +1 (514) 505 4436

VuWall Technology Europe GmbH  
Lustnauer Strasse 78  
72127 Kusterdingen  
Germany  
T +49 7071 5499 206

Control what you see.  
[www.vuwall.com](http://www.vuwall.com)  
[sales@vuwall.com](mailto:sales@vuwall.com)