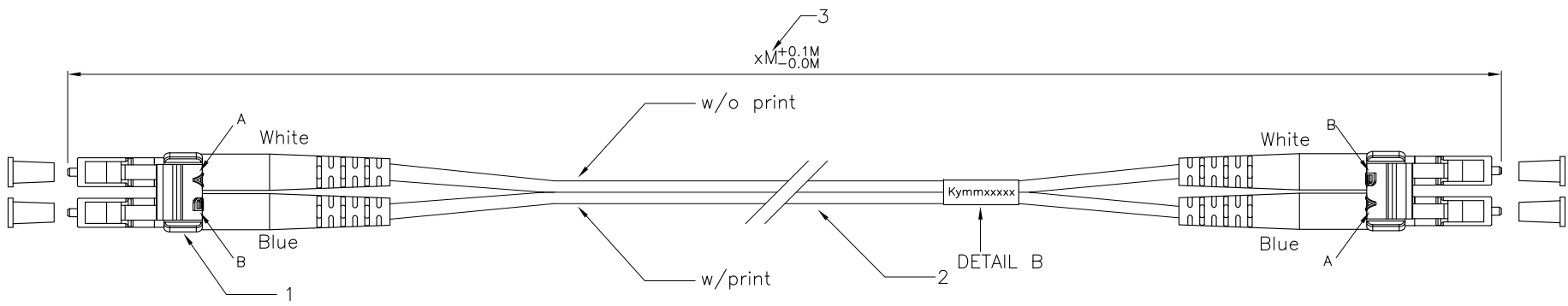


1 2 3 4 5 6

A



A

B


B

Description 1

ACT Fiber Optical Patch Cord

LC/UPC to LC/UPC Duplex Singlemode 9/125,OS2

Model: xxxx-xxxxxx
IIC-code: xxxxxx



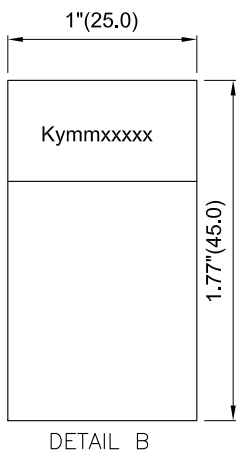
PO/NO. x xxxxxx xxxxxx

Performance: (@23°C) $\lambda=1310/1550 \pm 20\text{nm}$

Serial No.	Insertion Loss		Return Loss	
	1310nm	1550nm	1310nm	1550nm
Kymmxxxx	A			
	B			
	C			
	D			

-ACT advices to clean connector ferrule before usage to get optimal performance
-Always leave the dust caps on if the cable isn't installed

Prepared By: QC Date:



DETAIL B
y: Year; mm: Month
xxxx: Serial Number

Specification:

- LC Connector : LC/UPC Singlemode

Mode	Ferrule	Housing	Clip	Boot	Cap
SM Low Loss	Zirconia($\phi 1.25\text{mm}$)	Blue(PC)	Blue(PP)	White/Blue(TPE)	White(PE)
- 2-1.Cable Type : Zipcord

Category	Jacket O.D.	Jacket Material	Color
G.657A2(9/125um)	$\phi 2.0\text{mm}$	LSZH	Yellow

2-2.Cable Text Printing : ACT Premium Singlemode Fiber Optic Patch Cable
9/125um OS2 LSZH MM/YY xxxxM
- Length : xM

Performance:

- Insertion Loss : Singlemode Average < 0.10 dB, Max. < 0.2 dB.
- Return Loss : UPC > 55 dB
- Insertion Loss will be Increased after 500 mating : 0.2 dB Max
- Operating Temperature : -20°C to +70°C
- Storage Temperature : -40°C to +80°C


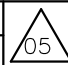
C

C

RL9950	50	50	164'(50000)	991250-RL9950	8716065227567
RL9945	45	45	147.6'(45000)	991245-RL9945	NO
RL9940	40	40	131.2'(40000)	991240-RL9940	NO
RL9935	35	35	114.8'(35000)	991235-RL9935	NO
RL9930	30	30	98.4'(30000)	991230-RL9930	8716065227550
RL9927	27	27	88.56'(27000)	991227-RL9927	NO
RL9925	25	25	82'(25000)	991225-RL9925	8716065224825
RL9922	22	22	72.16'(22000)	991222-RL9922	NO
RL9920	20	20	65.6'(20000)	991220-RL9920	8716065224818
RL9917	17	17	55.76'(17000)	991217-RL9917	NO
RL9915	15	15	49.2'(15000)	991215-RL9915	8716065224801
RL9912	12	12	39.36'(12000)	991212-RL9912	NO
RL9910	10	10	32.8'(10000)	991210-RL9910	8716065224795
RL9905	05	5	16.4'(5000)	991205-RL9905	8716065224788
RL9903	03	3	9.84'(3000)	991203-RL9903	8716065224771
RL9902	02	2	6.56'(2000)	991202-RL9902	8716065224764
RL9951	51	1.5	4.92'(1500)	9912015-RL9951	8716065224757
RL9901	01	1	3.28'(1000)	991201-RL9901	8716065224740
Part NO.	**	XX	L	Description 1	Description 2

D

D

"#": Matching DIM. "*": Important DIM. Others General DIM. GENERAL TOLERANCE OF DIMENSIONS X.XXX ±0.005 X.XX ±0.05 X.X ±0.1	DRAWING	27.JUN.2019	YMN	
	CHECK	27.JUN.2019	DAY	
	APPROVAL	27.JUN.2019	FRANK	
		DATE	NAME	ITEM NO.: RL99XX
	SCALE	1/1 (A4)	UNIT	mm
				DES.: LC-LC 9/125 Duplex OS2 2.0mm LSZH
	DRAWING NO.	LC-LC 9/125 Duplex OS2 2.0mm LSZH(S05)		
	DRAWING CLASSIFICATION	S	SHEET	1 OF 1
				

1 2 3 4 5 6

0 10cm