

4  
 $xM \begin{matrix} +0.1M \\ -0.0M \end{matrix}$

**Specification:**

1. LC(Short boot) Connector : LC/PC Multimode

Mode	Ferrule	Housing	Clip	Boot	Tube	Cap
MM Low Loss	Zirconia(ø1.25mm)	Ivory(PC)	Ivory(PP)	White/Yellow(TPE)	White/Yellow(PVC)	White(PE)

2. SC Connector : SC/PC Multimode

Mode	Ferrule	Housing	Boot	Cap
MM	Zirconia(ø2.50mm)	Black(PBT)	Red/Black(TPE)	Clear(PE)

3. 3-1.Cable Type : Zipcord

Category	Jacket O.D.	Jacket Material	Color
OM4(50/125um)	ø2.0mm	LSZH	Violet

3-2.Cable Text Printing : ACT Premium Multimode Fiber Optical Patch Cable  
 50/125um OM4 LSZH 12/15

4. Length : xM

**Performance:**

- a. Insertion Loss : MM Low Loss<0.15 dB
- b. Return Loss : >45 dB
- c. Insertion Loss will be Increased after 500 mating : 0.2 dB Max
- d. Operating Temperature : -20°C to +70°C
- e. Storage Temperature : -40°C to +80°C

Description 1

Description 2

**ACT Fiber Optical Patch Cord**

LC/SC 50/125 Duplex,OM4

**Model: xxxx-xxxxxx**  
**IIC-code: xxxxx**

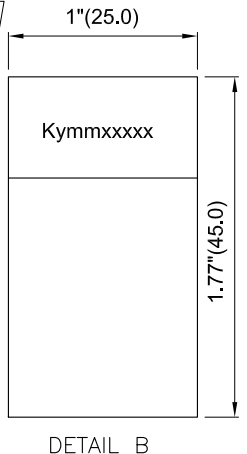


Performance:(@23°C)λ=850/1300±20nm

Serial No.	Insertion Loss	
	850nm	1300nm
Kymmxxxx	A	
	B	
	C	
	D	

-ACT advices to clean connector ferrule before usage to get optimal performance  
 -Always leave the dust caps on if the cable isn't installed

Prepared By :     QC     Date :           



DETAIL B  
 y: Year; mm: Month  
 xxxx: Serial Number

RL8750	50	50	164'(50000)	RL8750	8716065274608
RL8730	30	30	98.4'(30000)	RL8730	8716065274592
RL8720	20	20	65.6'(20000)	RL8720	8716065274585
RL8715	15	15	49.2'(15000)	RL8715	8716065274578
RL8710	10	10	32.8'(10000)	RL8710	8716065274561
RL8707	07	7	22.97'(7000)	RL8707	8716065308440
RL8705	05	5	16.4'(5000)	RL8705	8716065274554
RL8703	03	3	9.84'(3000)	RL8703	8716065274547
RL8702	02	2	6.56'(2000)	RL8702	8716065274530
RL8751	51	1.5	4.92'(1500)	RL8751	8716065274523
RL8701	01	1	3.28'(1000)	RL8701	8716065274516
Part NO.	**	XX	L	Description 1	Description 2

"#": Matching DIM. "*": Important DIM. Others General DIM.  GENERAL TOLERANCE OF DIMENSIONS X.XXX ±0.005 X.XX ±0.05 X.X ±0.1	DRAWING	14.NOV.2019	YMN	
	CHECK	14.NOV.2019	DAY	
	APPROVAL	14.NOV.2019	FRANK	
	DATE		NAME	
SCALE	1/1 (A4)	UNIT	mm	DES.: LC to SC Duplex Patch Cord
DRAWING NO. LC-SC 50/125 Duplex OM4 2.0mm LSZH(S04)		DRAWING CLASSIFICATION		S SHEET 1 OF 1

## Product Specification

### STANDARD COMPLIANCES

ANSI/TIA-568-C.3

ISO 11801 OM4 /IEC60793-2-10 type A1a

Telcordia GR-326-CORE Issue 4 February 2010 Compliance

RoHS Compliance for the Requirement of European Union Issued Directive 2011/65/EU

### CONSTRUCTION & CHARACTERISTICS

Optical Performance	Insertion loss typical	0.1dB
	Insertion loss maximum	0.15dB
	Return loss	≥45dB
	Polish	UPC
Connector	Connector A side	IEC61754-20 LC connector
	Connector B side	IEC61754-4 SC connector
	Ferrule	Ceramic Zirconia (ZrO2)
Cable	Fiber class	OM4
	Fiber type	Multimode 50/125
	Cable type	I-V(ZN)H 2.0x4.1mm LSZH Erika violet zipcord
	Tensile strength	90N (short time 150N)
	Operation temp.	-20°C to +70°C
	Vibration	10 to 55 Hz 1.5mm double amplitude
Fire Performance	Flame retardancy	IEC 60332-1-2
	Smoke density LS	IEC 61034
	Absence of halogen ZH	IEC 60754-1
	Cable Jacket	LSZH/FRNC
Marking	ACT Premium Multi Mode Fiber Optic Patch Cable 50/125um, OM4, LSZH, 12/15	

### 100% tested and approved

End-face geometry 100% guaranteed

ACT advices to clean every connector ferrule before usage to get optimal performance

Always leave the dust caps on if the cable isn't installed