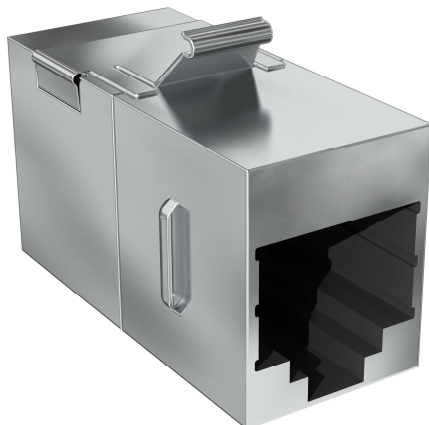


## REF : COUPLK6AFS

Shielded coupler RJ45 type Keystone female/female Category 6A



### Descriptions

- Shielded RJ45 coupler for connection of two RJ45 patch cords
- Connection without tool
- Format type Keystone

### Standards

- EIA/TIA 568-C.2
- IEC 60603-7-51
- ISO/EIC 11801 Ed 2
- EN 50173

### Technical and Electrical properties

<b>Electrical properties</b>	
Current rating	<b>1.5 A</b>
Insulation resistance	<b>500 MΩ</b>
Contact resistance	<b>20 MΩ</b>
DC resistance	<b>0.1 MΩ</b>
<b>Mechanical properties</b>	
Plug insertion life	<b>750 cycles min</b>
Temperature	<b>-40 to 68°C</b>

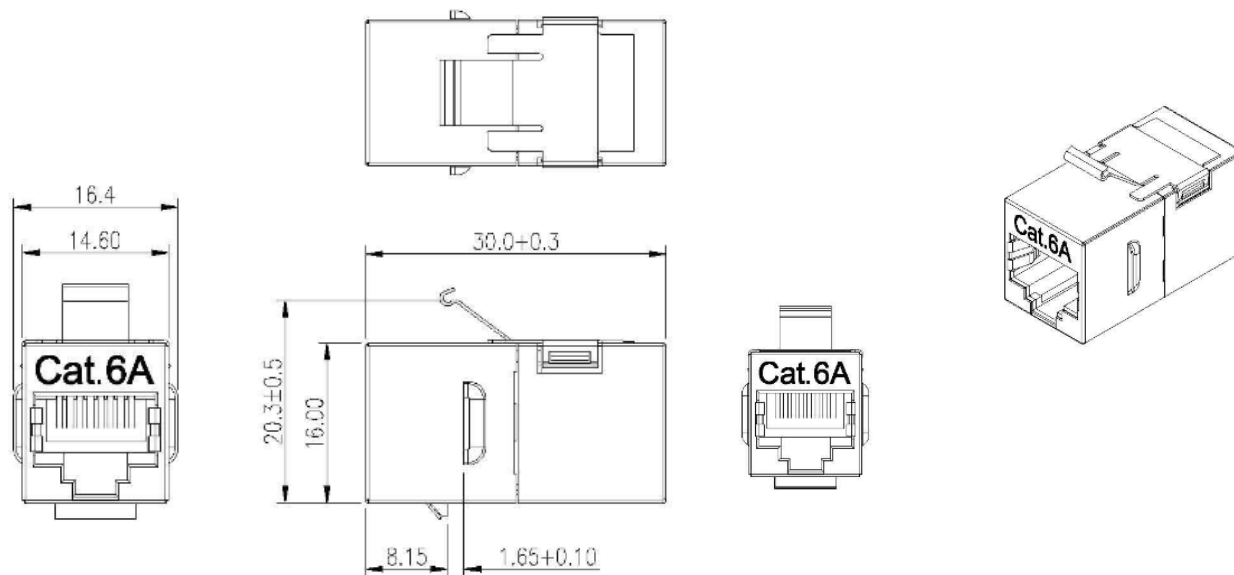
### Physical properties

Housing	<b>High impact flame retardant plastic</b>
Shielded	<b>0.25mm thickness electrolytic tin plate</b>
Bracket	<b>0.3t SUS 301</b>
Jack wiring	<b>Phosphor bronze Gold over Nickel plated</b>

## REF : COUPLK6AFS

Shielded coupler RJ45 type Keystone female/female Category 6A

### 3D picture



### Ordering information

Item No	Designation	Packaging
<b>COUPLK6AFS</b>	Shielded coupler RJ45 female/female CAT6A	Unit