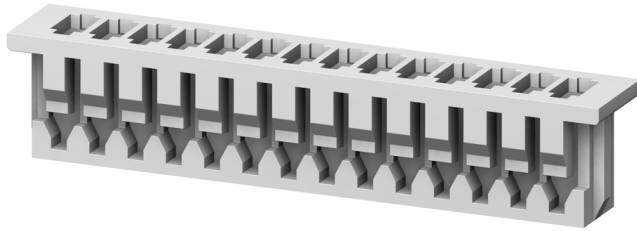


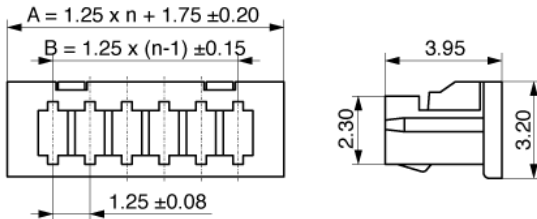
**Order code: 425-1-002-X-KS0**

6) WIRE TO BOARD

Series: **425**

Pitch (mm)	1,25
Mating pin size (range)	? 0,30
Cable termination	Crimp
No of contacts	2
Polarising	Yes
Locking	Friction lock
Material contact	Copper alloy
Material insulator	Thermoplast UL94V-0
Rated current	1,0 A
Rated voltage	100 V <sub>RMS</sub> / V <sub>DC</sub>
Withstand voltage	500 V <sub>RMS</sub> for 1 minute
Operating temperature	-25°C to +85°C
Packaging	Standard
A	4,25
B	1,25

Crimphousings with a 2,54 mm pitch. Compatible with industries standard.  
**Contacts are not included.**



Date: 18.04.2011

**Order code: 425-1-002-X-KS0**

MPE Garry GmbH  
 Schäfflerstraße 13  
 87629 Füssen/Germany

Phone: +49 (0) 83 62 / 91 56-0  
 Fax: +49 (0) 83 62 / 91 56-500  
 Email: [vk@mpe-connector.de](mailto:vk@mpe-connector.de)

Internet: [http://www.mpe-connector.de/index.php?lang=en&menu=4&s\\_product=425-1-002-X-KS0](http://www.mpe-connector.de/index.php?lang=en&menu=4&s_product=425-1-002-X-KS0)