

heavy|mate® - C146 Q socket insert 5 pole (5+PE)

Part No. C146 10B005 500 12

socket insert 5 + PE

Series Heavy duty connectors heavy|mate® - C 146

Subseries Heavy duty connector heavy|mate® - C146 Q



View represents all available contact positions.

## COMMON CHARACTERISTICS

No. of contacts		5 + PE
Type of contact		Crimp contact
Sex of Contact		Socket

## ELECTRICAL CHARACTERISTICS

Rated voltage	DIN EN 60664-1 / IEC 60664-1	230/400V (cond. - gnd / cond. - cond.)
Rated impulse voltage	DIN EN 60664-1 / IEC 60664-1	8000V
Rated current at 40°C		siehe Deratingkurven A
Installation category	DIN EN 60664-1 / IEC 60664-1	III
Insulation group	DIN EN 60664-1 / IEC 60664-1	II
Insulation resistance	DIN EN 60512-2, Test 3a / IEC 60512-2, Test 3a	$\geq 10^{10}$
Contact resistance	DIN EN 60512-2, Test 2a / IEC 60512-2 Test 2a	< 5 m
Pollution degree	DIN EN 60664-1 / IEC 60664-1	3

## CLIMATICAL CHARACTERISTICS

Climatic category	DIN EN 60068-1 / IEC 60068-1	40 / 125 / 21
Temperature range		-40 / 125°C

## MECHANICAL CHARACTERISTICS

Mechanical lifetime		$\geq 500$ mating cycles
---------------------	--	--------------------------

## MATERIALS

Contacts		Cu-alloy
Insert		PC
Colour		grey
Contact plating		silver plated / gold plated
Male contact		CuZn
Female contact		CuZn

## FURTHER CHARACTERISTICS

Termination		crimp
Wire gauge		0,5mm <sup>2</sup> - 4mm <sup>2</sup>
Wire gauge (AWG)		20 - 12
Flammability	UL 94	V-0

heavy|mate® - C146 Q socket insert 5 pole (5+PE)

Part No. C146 10B005 500 12

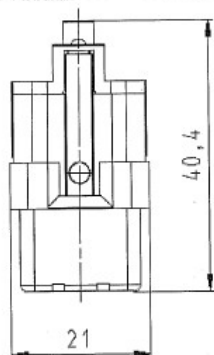
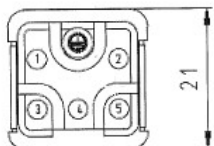
socket insert 5 + PE

Series Heavy duty connectors heavy|mate® - C 146

Subseries Heavy duty connector heavy|mate® - C146 Q



View represents all available contact positions.



26.06.2013

Drawing Dimensions in mm (Inch)

heavy|mate® - C146 Q socket insert 5 pole (5+PE)

Part No. C146 10B005 500 12

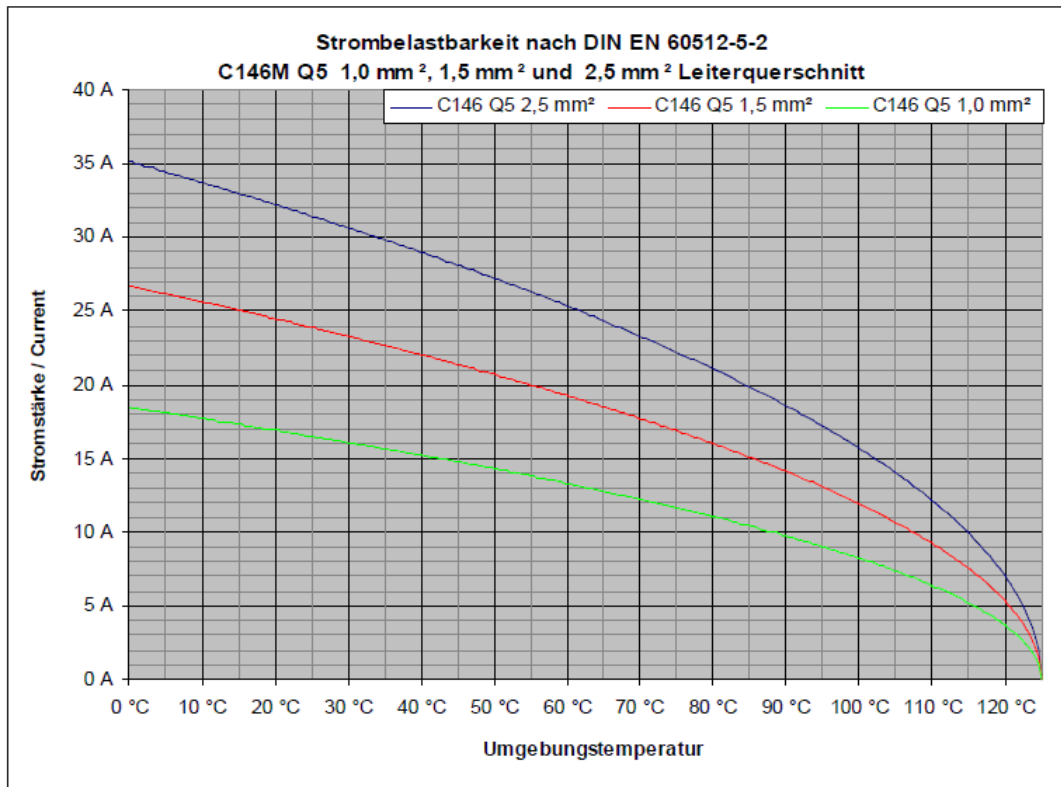
socket insert 5 + PE

Series Heavy duty connectors heavy|mate® - C 146

Subseries Heavy duty connector heavy|mate® - C146 Q



View represents all available contact positions.



Contact arrangement