

turned crimp contact male for wire gauge 2,5mm²

Part No. VN01 025 0038 1C

Series

Subseries



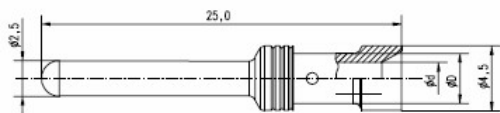
COMMON CHARACTERISTICS		
Contact diameter		2,5 mm
Wire gauge from		2,5mm ²
Wire gauge (AWG) from		14
Packaging / supplied as		Single contact
No. of pieces		100
Sex of Contact		Pin
Type of contact		Turned crimp contact
ELECTRICAL CHARACTERISTICS		
Contact resistance	DIN EN 60512-2-1, Test 2a / IEC 60512-2-1, Test 2a	0 m
MECHANICAL CHARACTERISTICS		
Mechanical lifetime		16 mating cycles

turned crimp contact male for wire gauge 2,5mm²

Part No. VN01 025 0038 1C

Series

Subseries



24.06.2013

Drawing Dimensions in mm (Inch)