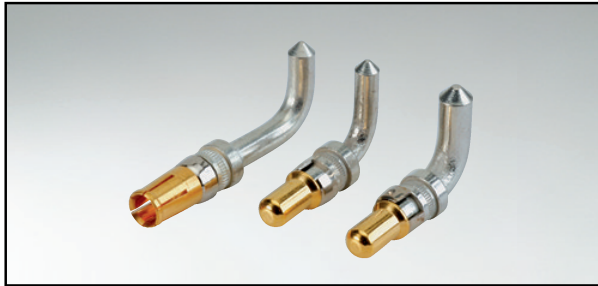


COMBINATION D-SUB CONTACTS

High power contacts – Solder pin – angled



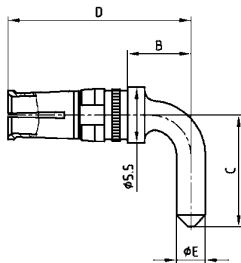
RoHS compliant – CSA listed, File No.: LR 115000-1-UL listed, File No.: E 228329

DESCRIPTION

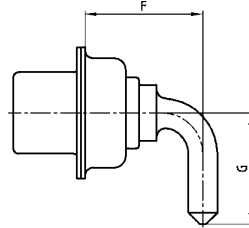
- Precision machined contacts
- Quality class 3: 50 mating cycles (gold plated)
- Quality class 1: 500 mating cycles (gold plated)
- Other quality classes on request

PRODUCT DRAWING

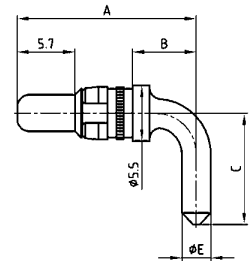
Socket contact



Installation dimension
Shell size 1-4

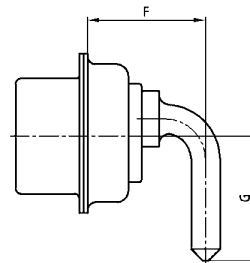


Plug contact

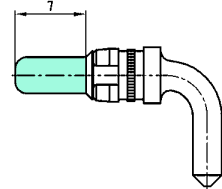


Shell size	Current rating	Termination	A	B	C	D	Ø E	F	G
1-4	15 A	55/59	14.54	3.00	10.50	14.68	1.90	8.35	10.50
1-4	20 A	56/73	17.84	6.30	11.00	17.98	2.85	11.65	11.00
1-4	30 A	57/74	26.54	15.00	9.50	26.68	3.20	20.35	9.50
1-4	40 A	58/75	17.84	6.30	11.00	17.98	3.75	11.65	11.00
5	20 A	66/81	20.39	8.85	14.00	20.53	2.85	14.20	12.58
5	30 A	67/82	20.39	8.85	14.00	20.53	3.20	14.20	12.58
5	30 A	65/85	20.39	8.85	14.00	20.53	3.75	14.20	12.58
5	40 A	60/77	26.54	15.00	13.50	26.68	3.20	20.35	12.08

Installation dimension
Shell size 5



Premating contact



ORDER DATA

SOCKET CONTACT				
Contact type	Shell size	Quality class	Termination*	Part Number
Socket	1-4	1	55	132 C 13009 X
Socket	1-4	3	59	132 A 13009 X
Socket	1-4	1	56	132 C 13019 X
Socket	1-4	3	73	132 A 13019 X
Socket	1-4	1	57	132 C 13029 X
Socket	1-4	3	74	132 A 13029 X
Socket	1-4	1	58	132 C 13039 X
Socket	1-4	3	75	132 A 13039 X
Socket	5	1	66	132 C 13060 X
Socket	5	3	81	132 A 13060 X
Socket	5	1	67	132 C 13070 X
Socket	5	3	82	132 A 13070 X
Socket	5	1	65	132 C 13059 X
Socket	5	3	85	132 A 13059 X
Socket	5	1	60	132 C 13049 X
Socket	5	3	77	132 A 13049 X

PLUG CONTACT				
Contact type	Shell size	Quality class	Termination*	Part Number
Plug	1-4	1	55	131 C 13009 X
Plug	1-4	3	59	131 A 13009 X
Plug	1-4	1	56	131 C 13019 X
Plug	1-4	3	73	131 A 13019 X
Plug	1-4	1	57	131 C 13029 X
Plug	1-4	3	74	131 A 13029 X
Plug	1-4	1	58	131 C 13039 X
Plug	1-4	3	75	131 A 13039 X
Plug	5	1	66	131 C 13060 X
Plug	5	3	81	131 A 13060 X
Plug	5	1	67	131 C 13070 X
Plug	5	3	82	131 A 13070 X
Plug	5	1	65	131 C 13059 X
Plug	5	3	85	131 A 13059 X
Plug	5	1	60	131 C 13049 X
Plug	5	3	77	131 A 13049 X
Plug premating	1-4	1		131 C 13109 X
Plug premating	1-4	1		131 C 13119 X
Plug premating	1-4	1		131 C 13129 X
Plug premating	1-4	1		131 C 13139 X
Plug premating	5	1		131 C 13160 X
Plug premating	5	1		131 C 13170 X
Plug premating	5	1		131 C 13159 X
Plug premating	5	1		131 C 13149 X

*Code use with constructor