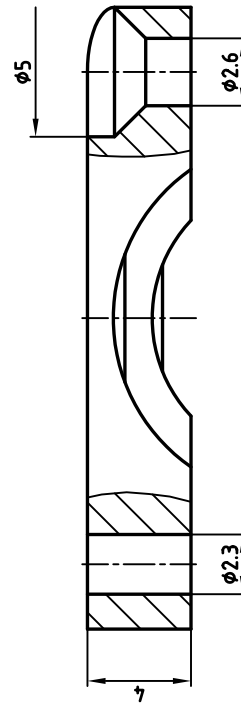
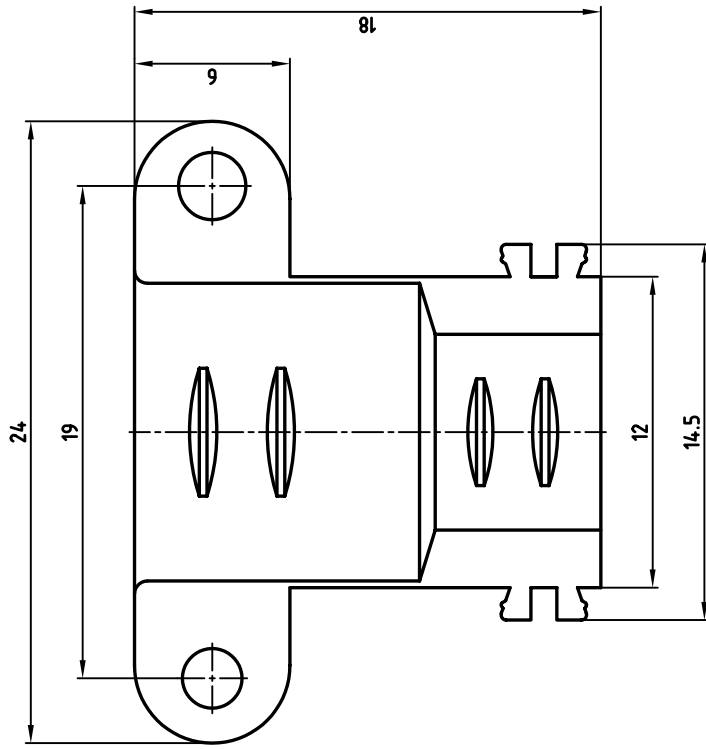
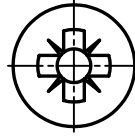
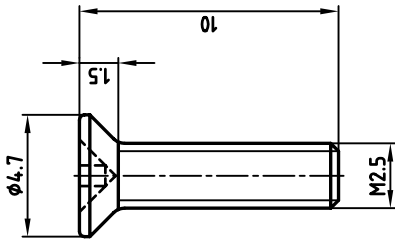


used for: D-SUB HOOD



- 1 SET CONSISTS OF:
- 2 CABLE CLAMPS
- 2 SCREWS

THIS DRAWING MAY NOT BE COPIED OR REPRODUCED IN ANY WAY, AND MAY NOT BE PASSED ON TO A THIRD PARTY WITHOUT WRITTEN PERMISSION. OWNERSHIP AND COPYRIGHT OF CONEC GMBH DO NOT ALTER CAD DRAWING BY HAND

rev.	description	date	name

tolerance		name	
2001	date	25.04.	Parel
drawn		25.04.	E. Mickenbecker
appd.			
norm			
e-old			

scale: 5:1
material: CABLE CLAMP: DIE-CAST ZINC
title: CABLE CLAMP SET FOR HOOD 9-37pos.

dwg no: AutoCAD 2000 DIN-A 3 sh: 1/1
part no: 160X1189X



F 1 2 3 4 5 6 7 8

F 1 2 3 4 5 6 7 8