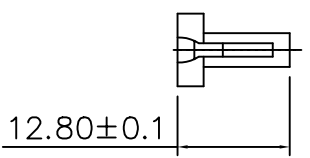
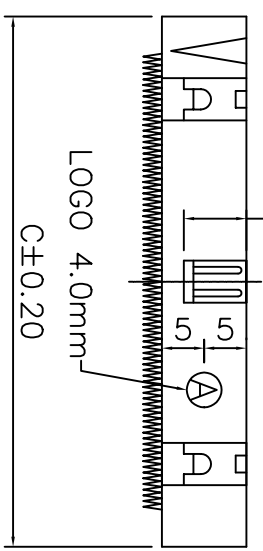
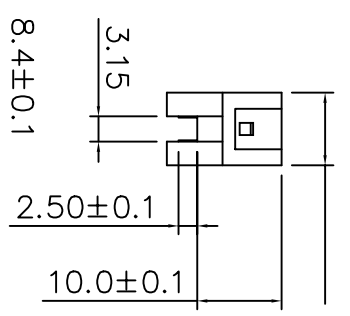
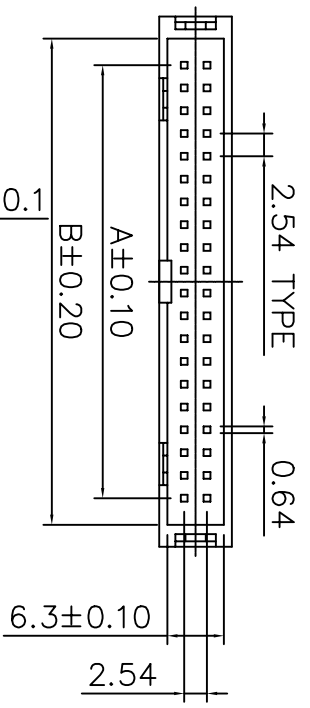


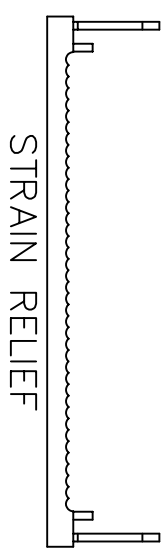
1 2 3 4 5 6 7

SPECIFICATION:
 Contact Resistance:
 30m ohm max.
 Insulator Resistance:
 1000m ohm min. at DC 500V
 Current Rating: 1A
 Dielectric Withstanding Voltage:
 AC 500V For 1 minute
 Operating Temperature:
 -55°C ~ +105°C
 Contact Material: Brass
 Insulator Material:
 PBT & 30% Glass Fiber UL 94V-0



WITHOUT EAR

Position	A	B	C
10	10.16	18.00	23.00
14	15.24	23.08	28.08
16	17.78	25.62	30.62
20	22.86	30.70	35.70
24	27.94	35.78	40.78
26	30.48	38.32	43.32
30	35.56	43.40	48.40
34	40.64	48.48	53.48
40	48.26	56.10	61.10
50	60.96	68.80	73.80
60	73.66	81.50	86.50
64	78.74	86.68	91.58



Änderung	Datum	Name	Datum	Name
		Bearb.	08.07.02	Hellwig
		Gepr.	08.07.02	
		Norm.		

Benennung
IDC-Low profile header
AWHC-xx-0111-T

Zeichnungsnummer
ASS 0111 CO
 Blatt
1/1

ASSMANN
 Electronic Components

Ersatz für ASS 0111 CO
 vom 19.01.01
 Blatt

1 2 3 4 5 6 7

H G F E D C B A