

turned crimp contact, female for wire gauge 0,75mm² - 1,0mm²

Part No. VN02 025 0036 1C

Series

Subseries



COMMON CHARACTERISTICS

| | | |
|-------------------------|--|--|
| Contact diameter | | 2,5 mm |
| Wire gauge from | | 0,75mm ² - 1,0mm ² |
| Wire gauge (AWG) from | | 18 |
| Packaging / supplied as | | Single contact |
| No. of pieces | | 100 |
| Sex of Contact | | Socket |
| Type of contact | | Turned crimp contact |

CLIMATICAL CHARACTERISTICS

| | | |
|-------------------|--|----------|
| Upper temperature | | + 125 °C |
| Lower temperatur | | - 40 °C |

MECHANICAL CHARACTERISTICS

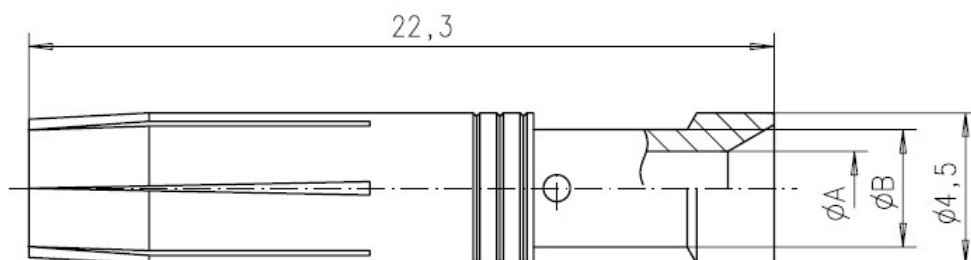
| | | |
|---------------------|--|-------------------|
| Mechanical lifetime | | 500 mating cycles |
|---------------------|--|-------------------|

turned crimp contact, female for wire gauge 0,75mm² - 1,0mm²

Part No. VN02 025 0036 1C

Series

Subseries



Drawing Dimensions in mm (Inch)

24.06.2013