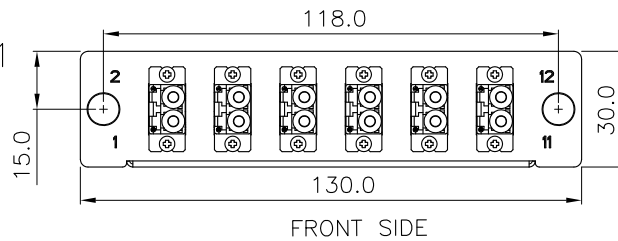


SCALE 1/1

SCALE 2/1



Specification :

Adaptor	Type	Color
MTP	SC Footprint A Type(Up to Down)	Black
LC	Zirconia	Aqua

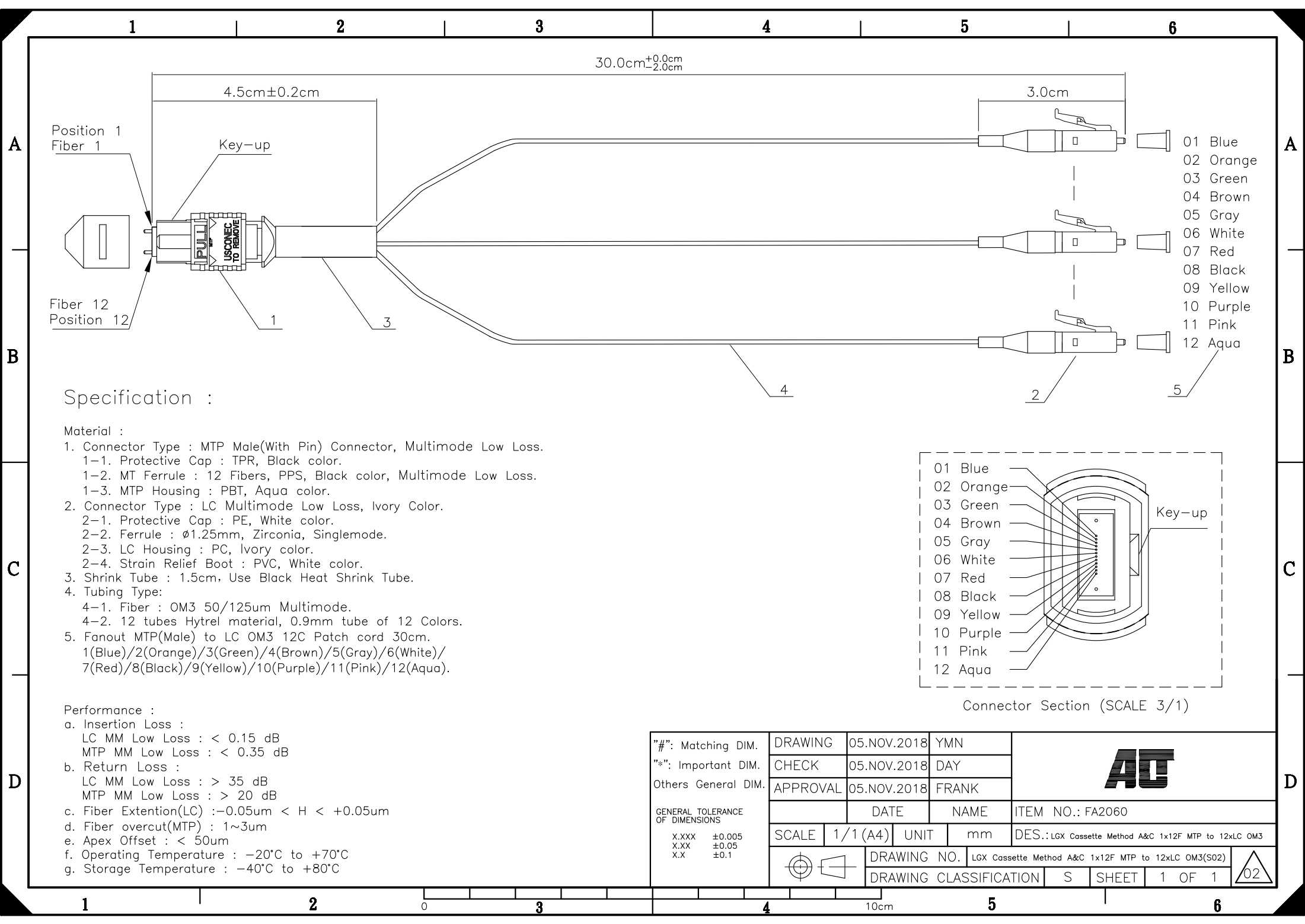
	Type
Direct Harness (12C)	OM3, 0.9mm Jacket, PVC, 12F MTP+Guide Pin, LC(MM), Low Loss

LC	Straight Version	MTP
1	←→	1
2	←→	2
3	←→	3
4	←→	4
5	←→	5
6	←→	6
7	←→	7
8	←→	8
9	←→	9
10	←→	10
11	←→	11
12	←→	12

LC Fiber Number	Jacket Color	Fiber Position	MTP Fiber Number
Fiber 1	Blue	B	Fiber 1
Fiber 2	Orange	A	Fiber 2
Fiber 3	Green	B	Fiber 3
Fiber 4	Brown	A	Fiber 4
Fiber 5	Gray	B	Fiber 5
Fiber 6	White	A	Fiber 6
Fiber 7	Red	B	Fiber 7
Fiber 8	Black	A	Fiber 8
Fiber 9	Yellow	B	Fiber 9
Fiber 10	Purple	A	Fiber 10
Fiber 11	Pink	B	Fiber 11
Fiber 12	Aqua	A	Fiber 12

- a. Dimension: 1.18" x 2.95" x 5.12"
(30.0 x 75.0 x 130.0mm)
- b. Weight: 0.23kg.
- c. Surface Finished: Painted, BK(RAL9005)

"#": Matching DIM. "*": Important DIM. Others General DIM. GENERAL TOLERANCE OF DIMENSIONS X.XXX ±0.005 X.XX ±0.05 X.X ±0.1	DRAWING	05.NOV.2018	YMN	
	CHECK	05.NOV.2018	DAY	
	APPROVAL	05.NOV.2018	FRANK	
		DATE	NAME	ITEM NO.: FA2060
SCALE	1/1 (A4)	UNIT	mm	DES.: LGX Cassette Method A&C 1x12F MTP to 12xLC OM3(S02)
		DRAWING NO.	LGX Cassette Method A&C 1x12F MTP to 12xLC OM3(S02)	
		DRAWING CLASSIFICATION	S	SHEET 1 OF 2



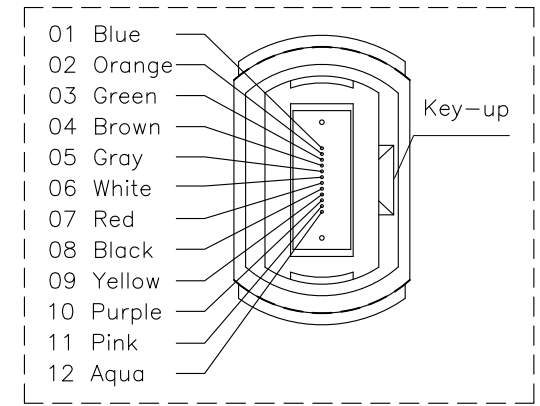
Specification :

Material :

1. Connector Type : MTP Male(With Pin) Connector, Multimode Low Loss.
 - 1-1. Protective Cap : TPR, Black color.
 - 1-2. MT Ferrule : 12 Fibers, PPS, Black color, Multimode Low Loss.
 - 1-3. MTP Housing : PBT, Aqua color.
2. Connector Type : LC Multimode Low Loss, Ivory Color.
 - 2-1. Protective Cap : PE, White color.
 - 2-2. Ferrule : $\varnothing 1.25\text{mm}$, Zirconia, Singlemode.
 - 2-3. LC Housing : PC, Ivory color.
 - 2-4. Strain Relief Boot : PVC, White color.
3. Shrink Tube : 1.5cm, Use Black Heat Shrink Tube.
4. Tubing Type:
 - 4-1. Fiber : OM3 50/125um Multimode.
 - 4-2. 12 tubes Hytrel material, 0.9mm tube of 12 Colors.
5. Fanout MTP(Male) to LC OM3 12C Patch cord 30cm.
 - 1(Blue)/2(Orange)/3(Green)/4(Brown)/5(Grey)/6(White)/7(Red)/8(Black)/9(Yellow)/10(Purple)/11(Pink)/12(Aqua).

Performance :

- a. Insertion Loss :
 - LC MM Low Loss : $< 0.15 \text{ dB}$
 - MTP MM Low Loss : $< 0.35 \text{ dB}$
- b. Return Loss :
 - LC MM Low Loss : $> 35 \text{ dB}$
 - MTP MM Low Loss : $> 20 \text{ dB}$
- c. Fiber Extention(LC) : $-0.05\mu\text{m} < H < +0.05\mu\text{m}$
- d. Fiber overcut(MTP) : 1~3um
- e. Apex Offset : $< 50\mu\text{m}$
- f. Operating Temperature : -20°C to $+70^{\circ}\text{C}$
- g. Storage Temperature : -40°C to $+80^{\circ}\text{C}$



Connector Section (SCALE 3/1)

"#" : Matching DIM. "*" : Important DIM. Others General DIM.	DRAWING	05.NOV.2018	YMN	AG
	CHECK	05.NOV.2018	DAY	
	APPROVAL	05.NOV.2018	FRANK	
GENERAL TOLERANCE OF DIMENSIONS X.XXX ±0.005 X.XX ±0.05 X.X ±0.1	DATE	NAME	ITEM NO.: FA2060	
	SCALE	1/1 (A4)	UNIT	mm
	DRAWING NO.	LGX Cassette Method A&C 1x12F MTP to 12xLC OM3(S02)		
	DRAWING CLASSIFICATION	S	SHEET	1 OF 1